

# Network Video Recorder

## NVR502-B-IQ Series



### Features

- Support Ultra H.265/H.265/H.264 video formats
- 9/16/32-channel input
- Supports mainstream cameras of ONVIF conformance(Profile S, Profile G, Profile T ) and RTSP protocols
- Support 1-ch HDMI, 1-ch VGA. HDMI up to 4K (3840x2160) resolution
- Support HDMI and VGA independent output
- Up to 16 Megapixels resolution recording
- ANR technology to enhance the storage reliability when the network is disconnected
- Support cloud upgrade

### Specifications

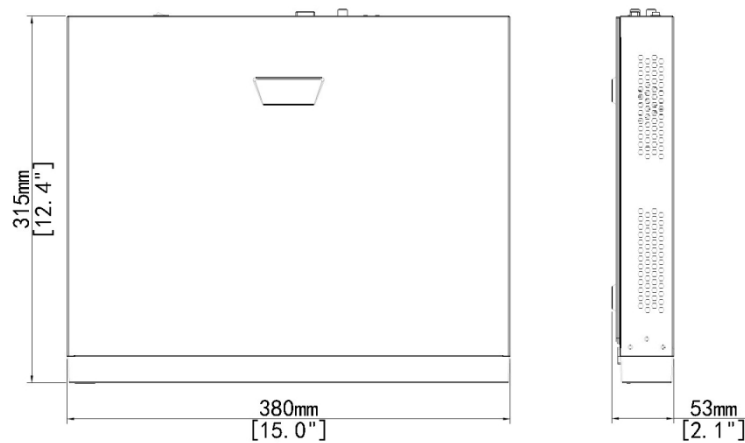
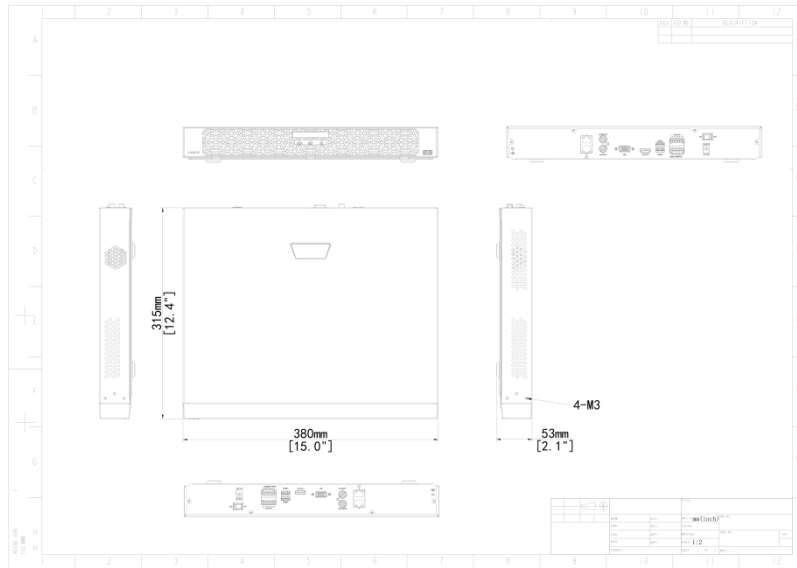
Decoding	Description
Decoding Format	NVR502-09B-IQ/NVR502-16B-IQ:Ultra 265, H.265, H.264
Decoding Capability	<p>NVR502-09B-IQ:Smart Off: 2 x 16MP@30, 2 x 12MP@30, 4 x 4K@30, 8 x 4MP@30, 9 x 3MP@30, 9 x 1080P@30</p> <p>Smart On: 2 x 12MP@30, 2 x 4K@30, 6 x 4MP@30, 8 x 3MP@30, 9 x 1080P@30</p> <p>NVR502-16B-IQ:Smart Off: 2 x 16MP@30, 2 x 12MP@30, 4 x 4K@30, 8 x 4MP@30, 10 x 3MP@30, 16 x 1080P@30</p> <p>Smart On: 2 x 12MP@30, 2 x 4K@30, 6 x 4MP@30, 8 x 3MP@30, 12 x 1080P@30, 16 x</p>

	720P@30
Decoding Capability Description	NVR502-09B-IQ/NVR502-16B-IQ:*. The resolution of each channel cannot exceed 8192 pixels in length and 4096 pixels in width.; *. For VGA/HDMI independent output, the VGA live video is output by default. To output the highest resolution video from the HDMI port, please clear the VGA video on the preview page.
Audio Compression	NVR502-09B-IQ/NVR502-16B-IQ:G.711A, G.711U
<b>Network</b>	<b>Description</b>
Incoming Bandwidth	NVR502-09B-IQ/NVR502-16B-IQ:Smart Off: 320Mbps Smart On: 160Mbps
Outgoing Bandwidth	NVR502-09B-IQ/NVR502-16B-IQ:160Mbps
Remote Users	NVR502-09B-IQ/NVR502-16B-IQ:128
Protocols	NVR502-09B-IQ/NVR502-16B-IQ:TCP/IP; P2P; NTP; DHCP; PPPoE; HTTP; HTTPS; DNS; DDNS; SNMP; SMTP; NFS; RTSP; IPv6; IPv4
Browser(Plugin)	NVR502-09B-IQ/NVR502-16B-IQ:Windows: IE (IE10/ 11), Firefox (version 52.0 and above), Chrome (version 45 and above), Edge (version 79 and above)
<b>Video/Audio Input</b>	<b>Description</b>
IP Video Input	NVR502-09B-IQ:9-ch NVR502-16B-IQ:16-ch
RCA Audio Input	NVR502-09B-IQ/NVR502-16B-IQ:1-ch
<b>Video/Audio Output</b>	<b>Description</b>
HDMI Output	NVR502-09B-IQ/NVR502-16B-IQ:4K(3840x2160)/30Hz, 1920x1080/60Hz, 1920x1080/50Hz, 1600x1200/60Hz, 1280x1024/60Hz, 1280x720/60Hz, 1024x768/60Hz
VGA Output	NVR502-09B-IQ/NVR502-16B-IQ:1920x1080/60Hz, 1920x1080/50Hz, 1600x1200/60Hz, 1280x1024/60Hz, 1280x720/60Hz, 1024x768/60Hz
RCA Audio Output	NVR502-09B-IQ/NVR502-16B-IQ:1-ch
Liveview Display	NVR502-09B-IQ:1/4/6/8/9 NVR502-16B-IQ:1/4/6/8/9/16
Corridor Mode Screen	NVR502-09B-IQ:3/4/5/7/9 NVR502-16B-IQ:3/4/5/7/9/10/12/16
<b>Two-way Audio</b>	<b>Description</b>
Two-way Audio	NVR502-09B-IQ/NVR502-16B-IQ:1-ch, RCA (Using the audio input and output)
<b>Snapshot</b>	<b>Description</b>
FTP/Schedule/Event Snapshot	NVR502-09B-IQ/NVR502-16B-IQ:4-ch snapshot, up to 4K resolution
<b>Recording</b>	<b>Description</b>

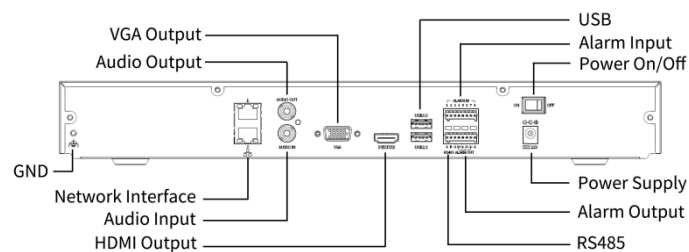
Recording Resolution	NVR502-09B-IQ/NVR502-16B-IQ:16MP/12MP/8MP/6MP/5MP/4MP/3MP/1080P/960P/720P /D1/2CIF/CIF
Synchronous Playback in Local	NVR502-09B-IQ:9-ch NVR502-16B-IQ:16-ch
<b>Smart</b>	<b>Description</b>
VCA Detection by IPC	NVR502-09B-IQ/NVR502-16B-IQ:Face Detection; face detection; Vehicle Detection; SIP (Intrusion Detection, Cross Line Detection, Enter Area, Leave Area); Ultra Motion Detection (UMD); Temperature Detection (Fire Detection, Smoking Detection, Temperature Measurement, Smoke and Fire Detection); People Counting (People Flow Counting, Crowd Density Monitoring); Video Metadata; Traffic Monitoring
Smart by NVR	NVR502-09B-IQ/NVR502-16B-IQ:Face Detection; face detection; Smart Intrusion Prevention (SIP); Ultra Motion Detection (UMD)
VCA Search	NVR502-09B-IQ/NVR502-16B-IQ:; ; Motor Vehicle Search; Non-Motor Vehicle Search; Human Body Search; General Search; People Counting Report; Heat Map; SmartSearch+; AcuSearch
Smart by IPC	NVR502-09B-IQ/NVR502-16B-IQ:All channels (up to 8 images/s in total)Face Detection, face detection, Vehicle Detection, Temperature Detection, SIP, UMD, Video Metadata, Traffic Monitoring
Search by Image	NVR502-09B-IQ/NVR502-16B-IQ:Support
Vehicle Picture Library	NVR502-09B-IQ/NVR502-16B-IQ:Up to 5 vehicle picture libraries, with up to 25,000 vehicle pictures in total
SIP by NVR	NVR502-09B-IQ/NVR502-16B-IQ:4-ch
UMD by NVR	NVR502-09B-IQ/NVR502-16B-IQ:8-ch
Capacity of Snapshot Records	NVR502-09B-IQ/NVR502-16B-IQ:2 millions records for face snapshot; 2 millions records for vehicle snapshot; 3 millions records for SIP; 2 millions records for video Metadata
<b>Alarm</b>	<b>Description</b>
General Alarm	NVR502-09B-IQ/NVR502-16B-IQ:Defocus Detection; Scene Change Detection; Object Left Behind; Object Removed; Auto Tracking; Motion Detection; Tampering; Human Body Detection; Video Loss; Alarm Input; Audio Detection
Alert Alarm	NVR502-09B-IQ/NVR502-16B-IQ:IP Conflict; Network Disconnected; Disk Offline; Disk Abnormal; Illegal Access; Hard Disk Space Low; Hard Disk Full; Recording/Snapshot Abnormal; Array Damaged; Array Degraded
<b>GUI Language</b>	<b>Description</b>
GUI Language	NVR502-09B-IQ/NVR502-16B-IQ:38 languages: Simplified Chinese, Traditional Chinese, English, Vietnamese, Thai, Turkish, Spanish (Latin America), Portuguese (Brazil), Spanish, Portuguese, French, German, Italian, Dutch, Polish, Czech, Hungarian, Slovak, Russian, Hebrew, Arabic, Ukrainian, Estonian, Bulgarian, Greek, Romanian, Danish, Swedish,

	Norwegian, Finnish, Croatian, Slovenia, Serbia, Korean, Japanese, Latvian, Lithuanian, Persian
<b>Hard Disk</b>	<b>Description</b>
SATA	NVR502-09B-IQ/NVR502-16B-IQ:2 SATA Interfaces
Capacity	NVR502-09B-IQ/NVR502-16B-IQ:Up to 16TB for each HDD (The maximum HDD capacity varies with environment temperature)
Disk Group	NVR502-09B-IQ/NVR502-16B-IQ:Support
Redundant Storage	NVR502-09B-IQ/NVR502-16B-IQ:Support
Disk Array Type	NVR502-09B-IQ/NVR502-16B-IQ:RAID 1
<b>External Interface</b>	<b>Description</b>
Network Interface	NVR502-09B-IQ/NVR502-16B-IQ:2 RJ45 10M/100M/1000M self-adaptive Ethernet Interface
USB	NVR502-09B-IQ/NVR502-16B-IQ:Front panel: 1 x USB2.0; Rear panel: 1 x USB2.0, 1 x USB3.0
RS485	NVR502-09B-IQ/NVR502-16B-IQ:1
RS232	NVR502-09B-IQ/NVR502-16B-IQ:N/A
Alarm In	NVR502-09B-IQ/NVR502-16B-IQ:8-ch
Alarm Out	NVR502-09B-IQ/NVR502-16B-IQ:2-ch
Power Supply	NVR502-09B-IQ/NVR502-16B-IQ:DC 12V/3A
Power Switch	NVR502-09B-IQ/NVR502-16B-IQ:Support
<b>Working Environment</b>	<b>Description</b>
Working Temperature	NVR502-09B-IQ/NVR502-16B-IQ:-10 °C ~ 50 °C (14 °F ~ 122 °F)
Working Humidity	NVR502-09B-IQ/NVR502-16B-IQ:≤ 90% RH (non-condensing)
Power Consumption (without HDD)	NVR502-09B-IQ/NVR502-16B-IQ:≤ 12W
<b>Dimensions</b>	<b>Description</b>
Weight (without HDD)	NVR502-09B-IQ/NVR502-16B-IQ:≤ 2Kg (4.4lb)
Height	NVR502-09B-IQ/NVR502-16B-IQ:1U
Dimensions	NVR502-09B-IQ/NVR502-16B-IQ:380mm × 315mm × 53mm (15.0"×12.4"×2.1")
<b>Certification</b>	<b>Description</b>
Certification	NVR502-09B-IQ/NVR502-16B-IQ:CE; FCC; UL; RoHS; WEEE
CE	NVR502-09B-IQ/NVR502-16B-IQ:EN 55032, EN 61000-3-3, EN IEC 61000-3-2, EN 55035
FCC	NVR502-09B-IQ/NVR502-16B-IQ:Part15 Subpart B

## Dimensions



## Rear Panel



**Zhejiang Uniview Technologies Co., Ltd.**

No. 369, Xietong Road, Xixing Sub-district, Binjiang District, Hangzhou City, 310051, Zhejiang Province, China

Email: [overseasbusiness@uniview.com](mailto:overseasbusiness@uniview.com); [globalsupport@uniview.com](mailto:globalsupport@uniview.com)

<http://www.uniview.com>

©2023-2024 Zhejiang Uniview Technologies Co., Ltd. All rights reserved.

\*Product specifications and availability are subject to change without notice.

\*Despite our best efforts, technical or typographical errors may exist in this document. Uniview cannot be held responsible for any such errors and reserves the right to change the contents of this document without prior notice.